



SEATTLE FOUNDATION

# Impact Report

2021-2022

# table of contents

03 the way forward

04 blueprint for impact

05 2021 highlights

09 financials

12 new leadership

# the way forward

**Our mission is to ignite powerful, rewarding philanthropy to make Greater Seattle a stronger, more vibrant community for all.**

We are working to create a thriving region where everyone can earn a decent living, be treated fairly, and feel a sense of belonging. We believe that all people deserve equitable access to opportunities and agency for self-determination—especially when it comes to political power, affordable housing, economic mobility, and quality education.

Seattle Foundation acknowledges 2021 was a very challenging year—our region continued to face compounding crises with COVID-19, increased gun violence, a widening racial wealth gap and economic devastation—exacerbating the centuries-long systemic inequities faced by Black, Indigenous and People of Color (BIPOC) communities. Our staff continued to balance family and remote work and experienced significant leadership change. Yet, we are encouraged by the continued progress we have made in 2021 and into 2022 in our core strategic grantmaking programs, as well as the Fund for Inclusive Recovery to help meet the critical needs of people most impacted by the pandemic.

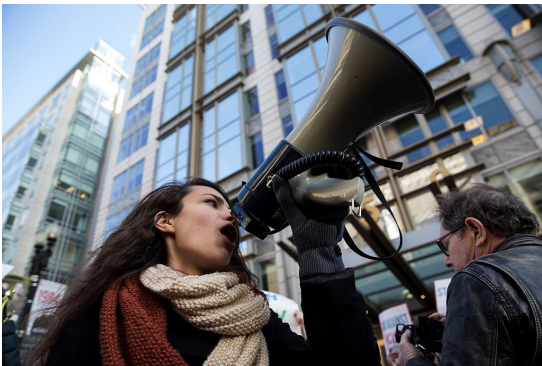
Additionally, we launched the Black-Led Joy and Wellness Fund through our REPAIR framework, committing to a minimum investment of \$25 million to Black-led organizations in the Seattle region over five years, beginning in 2021. REPAIR represents a comprehensive and holistic approach to a sustained shift in how we partner with and support the Black community across all organizational functions.

In this report, we have highlighted some of last year's most significant insights and accomplishments (read on to learn more about the Fund for Inclusive Recovery, REPAIR, the Black-Led Joy and Wellness Fund, and the Evergreen Impact Housing Fund, as well as our guiding framework, the Blueprint for Impact). To illuminate the path forward, we have also provided a snapshot of 2022 so far.

**Thank you to all of our philanthropists, grantees, and partners for your incredible work and generosity, without which none of this would be possible.**

# blueprint for impact

The Blueprint for Impact is Seattle Foundation's guiding framework that outlines a series of bold strategies for advancing racial equity, shared prosperity, and belonging in our region. This vision focuses on three reinforcing pillars.



## A Just Democracy

A Just Democracy ensures individuals and communities are fairly represented and hold political power such that policies and processes center those most impacted by inequities.



## Equitable Economy

An Equitable Economy ensures inclusive growth and fundamental financial security for individuals and communities.

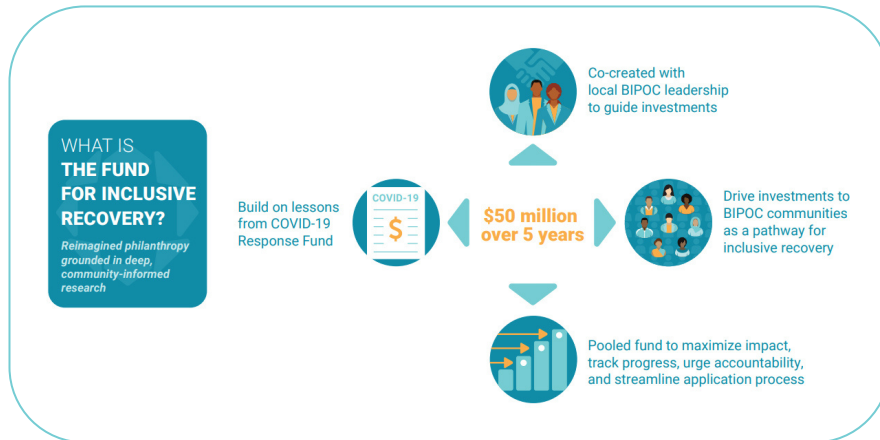


## Resilient Environment

A Resilient Environment ensures that individuals and communities thrive in a healthy built and natural environment.

# 2021 highlights

## Fund for Inclusive Recovery

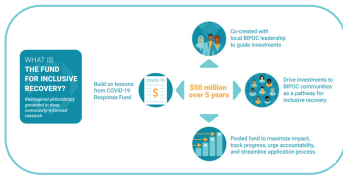


## REPAIR



## Evergreen Impact Housing Fund





# Fund for Inclusive Recovery

Launched in 2021, the Fund for Inclusive Recovery aims to raise \$50 million over a five-year period and make investments that will lay the groundwork for reinventing our region as we move from the COVID-19 pandemic to a reimagined, more equitable future.

## Our Role

The COVID-19 pandemic made plain the harsh realities that BIPOC communities have faced for centuries. The Fund for Inclusive Recovery is a pooled fund, guided by a Community Advisory Group, to help meet the critical needs of people most impacted by the pandemic. The Fund drives investments to BIPOC organizations, movements, and communities, creating a pathway for Greater Seattle's inclusive recovery.

The Fund builds on the important lessons learned from Seattle Foundation's COVID-19 Response Fund—where we witnessed how deeply Black, Indigenous, and communities of color were hit by the pandemic after generations of oppression and discrimination. The COVID-19 Response Fund helped meet acute, direct needs, providing hundreds of organizations with critical funding.

## Our Approach

The Fund for Inclusive Recovery aims to accelerate our region's ability to overcome the health and economic impacts of COVID-19 and rebuild toward a more just society. It is guided by the following principles.

- **BIPOC Community Investment:** further building the capacity of BIPOC-led organizations and movements.
- **Community-led Change:** led by and rooted in communities most impacted.
- **Rethinking Philanthropy:** reimagining our region as a better, stronger, and more equitable place rather than a return to the status quo.

### Fund for Inclusive Recovery Community Advisory Group

Amy Liu, Microsoft  
 Aneelah Afzali, Muslim Association of Puget Sound  
 Bernadette Merikle, CCER  
 Colleen Echohawk, Eighth Generation  
 Eric Holzapfel, League of Education Voters  
 Esther Lucero, Seattle Indian Health Board  
 Ginger Kwan, Open Doors for Multicultural Families  
 Jodi Nishioka, Communities Rise  
 Lalita Uppala, Indian Association of Western WA  
 Lilliane Ballesteros, Latino Community Fund  
 Matias Valenzuela, Public Health—Seattle & King County

Regina Elmi, Somali Parents Education Board  
 Sili Savusa, White Center CDA  
 Steven Sawyer, POCAAN  
 Suni Tolton, City of Shoreline  
 Taffy Maene, UTOPIA  
 Tim Lennon, LANGSTON  
 Trish Dziko, Technology Access Foundation  
 Ubax Gardheere, Community Advocate



# REPAIR

REPAIR, which stands for **Racially Equitable Philanthropy Aimed at Initiating Reparations**, is aimed at advancing and supporting Black-led community leadership. Officially launched in summer of 2021, REPAIR is the logical evolution of our focus on BIPOC populations under the Blueprint for Impact. Through REPAIR, Seattle Foundation is committing to a minimum investment of \$25 million to Black-led organizations in the Seattle region over five years.

## Our Role

Philanthropic institutions, including Seattle Foundation, must acknowledge the role we have played in historically underfunding the Black community, and that reparative action is necessary to directly address those past harms (ABFE's research has shown total philanthropic support for Black communities hovering at around 1.8%). It's undeniable that Black-led organizations (community-based organizations with majority Black staff and/or Board leadership) are in deep need of increased investments from funders in this region.

REPAIR is the result of Seattle Foundation's multi-year investment to better understand the needs of the Black community in King County. In alignment with our Blueprint for Impact's guiding principles, this is our opportunity to be bold, center equity, and focus on innovative, community-led solutions.

Our investment in the  
Black community in  
King County, 2021

**\$12.3M**

## Our Approach

REPAIR represents a comprehensive and holistic approach to a sustained shift in how we partner with and support the Black community across all organizational functions—engagement of donors and fundholders, grantmaking priorities, and development of internal accounting and operational practices.



Photo by Michael B. Maine

### Black-Led Joy and Wellness Fund

Building off of REPAIR, the Black-Led Joy and Wellness Fund was established in 2021 in partnership with the Black-Led Organization Cohort. This fund is solely dedicated to the joy and rest of Black staff at Black-led organizations. In its first year, the Fund distributed \$540,000 to 29 Black-led and serving organizations in King County.



# Evergreen Impact Housing Fund

Evergreen Impact Housing Fund (EIHf) uses catalytic capital to boost the production of affordable housing in King County and advance health, equity, shared prosperity, and belonging.

## Our Role

Evergreen Impact Housing Fund is managed by Seattle Foundation Impact Funds Manager, LLC and partners with the Washington State Housing Finance Commission to identify and invest in projects. Area businesses have come together to support EIHf: Microsoft made a \$50 million commitment to provide momentum and funding for projects; local credit unions collaboratively invested \$11.1 million in the first project in Renton; and initial research and development funds were provided by JPMorgan Chase & Co. with additional support from Tableau Foundation.

## Our Approach

The Puget Sound region has an acute affordable housing crisis—with a need for more than 45,000 housing units to rent and own. EIHf focuses on accelerating financing to large-scale developments of 200+ apartments to help address this shortage. These developments face funding barriers and have limited financing options. Too often, they get downsized, delayed, or moved away from high-opportunity areas—or they don't get built at all. Private, philanthropic capital from EIHf can fill critical funding gaps that allow these large-scale projects to move forward.

EIHf has invested in four projects that will provide 745+ units of affordable housing for working families in our region:

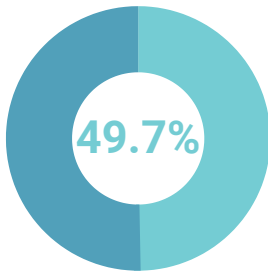
**Solera (Renton)**  
**Watershed (Renton)**  
**Grata Totem Lake (Kirkland)**  
**Bitter Lake Linden (Seattle)**

# financials

In 2021, Seattle Foundation made over 9,400 grants, totaling \$221.59 million from nearly 800 individual funds. The following graphs give a breakdown by fund type.

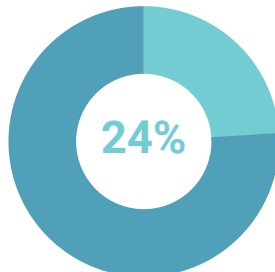
We also invite you to [review our full audited consolidated financials](#).

## grantmaking by fund type



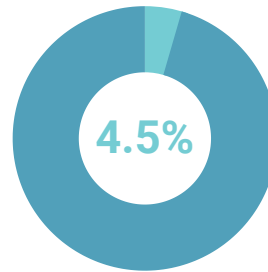
\$110.14 million  
**Donor Advised Funds**

*These funds allow donors to recommend grant recipients that align with their values and interests.*



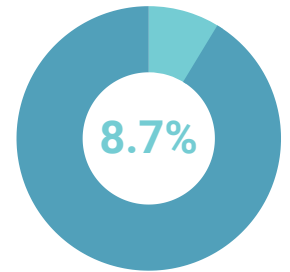
\$53.19 million  
**Area of Interest Funds**

*These funds, which include Seattle Foundation programmatic funds, allow donors to support a specific field of interest or specific geographic area.*



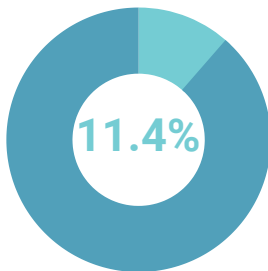
\$9.96 million  
**Designated Funds**

*These funds are designated by donors who wish to support a specific charitable organization, in many cases both during their lifetimes and beyond. They can be endowed but this is not a requirement.*



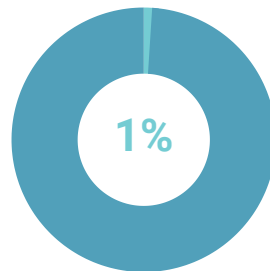
\$19.24 million  
**Fiscal Sponsorships**

*Seattle Foundation is the fiscal sponsor of seven organizations, each of which is considered a program of Seattle Foundation. Contributions received for sponsored organizations are recognized as donor-restricted contributions.*



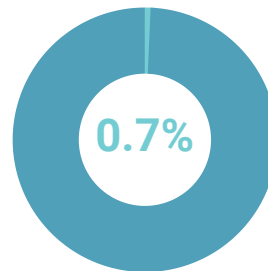
\$25.28 million  
**Supporting Organizations**

*Seattle Foundation performs accounting, administrative functions, and a majority of Board appointments for Supporting Organizations with their own investment policies and grant guidelines.*



\$2.25 million  
**Community Funds**

*These unrestricted funds power Seattle Foundation's community programs.*



\$1.53 million  
**Scholarship Funds**

*Driven by donors, a variety of scholarship funds support areas of study, communities of students, and other specific areas of focus.*

# \$54 MILLION

Grants made in 2021 through our community programs

**\$10M**

COVID-19 Response  
Fund

**\$33.8M**

All In Washington

**\$9.5M**

Core Programs &  
Partnerships

**\$700K**

Additional Funder  
Collaboratives



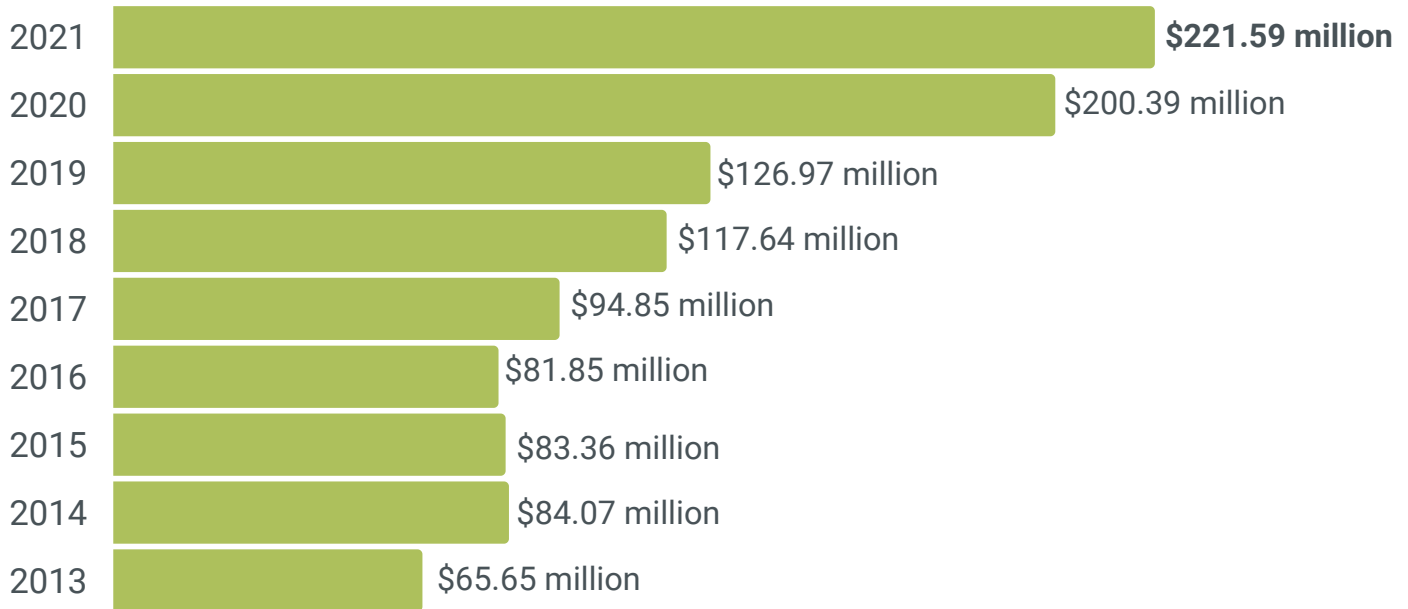
*Photo: Nurturing Roots, a Black-Led Joy and Wellness Fund grant recipient. Photo by Michael B. Maine*

# \$19.7 MILLION

of new Impact Investing dollars

# grantmaking from 2013 to 2021

With the support of our philanthropists and partners, Seattle Foundation has seen our grants increase by 237% over the last nine years, from \$65.65 million in 2013 to \$221.59 million in 2021. Collectively, we have granted out nearly **\$1.08 billion** to the community since 2013.



## grantmaking to BIPOC organizations

As our guiding framework, the Blueprint for Impact creates a path toward long-term, systemic change by directing philanthropic dollars to initiatives led by communities most impacted by persistent inequalities. In the past five years, we have dramatically expanded our core purpose to invest in strengthening community capacity and resilience through organizing and movement building, while growing leadership and power in communities most impacted. As one measure of this commitment, in 2021, of the \$9.5 million in grants made through our Core Programs, **85%\* went to BIPOC-led and serving organizations.**

*\* Note: this number reflects only the organizations who submitted self-identified demographic data.*

# new leadership

**In March 2022, after an extensive nationwide search, we were thrilled to announce our new President & CEO Alesha Washington.**

Going into the search process for the next President & CEO, we knew that the Foundation needed a truly exceptional leader—someone committed to reimagining philanthropy to advance racial equity with an authentic voice who can communicate effectively with all of our community members, including young philanthropists, more experienced ones, our community partners, and public and private sector leaders. We needed a changemaker who could build and activate alliances with business, government, and nonprofits. Our Search Committee—consisting of members of the Board of Trustees—undertook an intensive, nationwide search process, which resulted in a pool of dozens of diverse, outstanding candidates. The search process included proactive engagement with fundholders and a wide range of community leaders.

Alesha is a leader with high hopes for what we can achieve and will help Seattle Foundation fulfill the Blueprint for Impact. She comes to the Foundation with significant leadership experience in diverse sectors including her most recent position as Program Director for Vibrant Neighborhoods and Inclusive Economy at the George Gund Foundation in Cleveland, Ohio and was previously the Vice President of Government Advocacy at the Greater Cleveland Partnership, one of the largest chambers of commerce in the country. At Greater Cleveland, Alesha gained a keen understanding of how business and the public sector can work together to achieve common goals.

Alesha inherits the Foundation's 75-year history of prudent stewardship of the region's generosity and uniting people from the many diverse corners of our community. She brings new expertise on how to catalyze lasting change in ways that leverage the best of fundholders, Foundation staff, trustees, community leaders, public sector leaders and the private sector. Her starting point is the Foundation's Blueprint for Impact. We are thrilled to welcome Alesha and look forward to her leadership as we work together to build a stronger, more vibrant community for all.



# the heart and science of philanthropy



**seattle foundation**

1601 fifth ave ste 1900

seattle, wa 98101

206.622.2294

[seattlefoundation.org](http://seattlefoundation.org)

[info@seattlefoundation.org](mailto:info@seattlefoundation.org)